

# Petersfield News

Website: [www.petersfield.cambs.sch.uk](http://www.petersfield.cambs.sch.uk) Contact: [office@petersfield.cambs.sch.uk](mailto:office@petersfield.cambs.sch.uk)

*Spring Term — Number 12 Wednesday 1st April 2009*

## Church Services

**Sunday 5th April-Palm Sunday**

**8.15a.m Eucharist in Barrington**

**9.30 a.m. Eucharist (BCP) in Wim-pole**

**11.00 a.m. United Service for Palm Sunday—Methodist Church**

**11.00 a.m. Eucharist in Croydon**

**6.00p.m. Evening Prayers in St Andrew’s Or-well**



**We are proud to help celebrate the Diocese of Ely's 900th anniversary this year.**

## Security

We have been informed that a stranger entered school property in the East of the County on Friday and began speaking to pupils. Police have been informed.

Description is as follows: man aged 50-60, with white hair, short-sleeved checked shirt and light trousers.

As always, schools are advised to maintain vigilance and to report any suspicious incident to the Police.

**School gates will now be locked during the school day, so that all enter via our main entrance.**

Thanks to Holly’s Mum, Tracey, for coming to the rescue for Petersfield Panda in IKEA. Phew!

We need the rest of the hairy clan to go travelling too, if possible over Easter, please. They suffer from itchy feet!

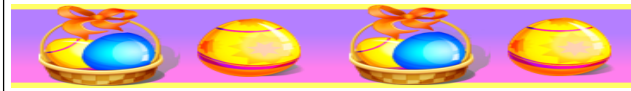


Anna Rawlins is making and selling Easter Eggs in aid of the RSPB Sumatran Rainforest Appeal.

If you would like some handmade Easter eggs ( made with fair trade chocolate!), please come along to the Pannier Market on Saturday at the Methodist Church School Room 10.00- 12.00 noon)

## EASTER.

Our School Easter service will be a bit different this year, as each class will be contributing something musical to our act of worship. We will be at St Andrew’s at 9.30a.m. on Friday 3rd April, and we look forward to a fun end of term featuring chickens, singing and wonderful percussion. This is a service, not a performance, and everyone is very welcome to join us.



**Parents, can we remind you it’s “OPEN LUNCH DAY” on Thursday 2nd April. Please don’t forget to turn up if you’ve booked.**

We don’t want you missing your roast beef and Yorkshire pudding!.

## WORDLES

L  
 O  
 V  
 E

*Last answer-Middle age spread*

Reception and year 1 had a great time on Monday at Wim-pole Hall Farm. They were able to see the spring lambs, see the ducks and chicks hatch and have a wonderful walk through the woods. They had a real **spring** in their steps when they got back!

**Enjoy singing? Want to join our Petersfield School Choir?**

Get in touch with the office and arrange to join us now! We meet on a Monday in the hall after school.



We are a small group at present, but there is lots of room for great singers to work together in harmony!

Many thanks to those who have been joining in our “Walk to School Week”- Make sure you join us, if you can, at about 8.40am. at the Chequers to walk to school with Mrs Hardy’s yellow band of stalwart walkers. It is fun for all and is good exercise for a healthy lifestyle.

Please ensure that ADULTS who drop children off late come into the school office and sign the late register. You are legally responsible for your children, and they shouldn’t just wander late in to school on their own.

**Easter Egg decorating competition!**

We will ask everyone to bring in their entries on Thursday, tomorrow morning. They will be judged by Mr Hooker Mrs Wolfe and an Easter egg will be given as a prize for each class.

**FINANCE**—We still have outstanding dinner money payments. Please could we have this money in by Thursday 2nd. Thank you.

**Music Lessons**—Please could we have any outstanding payments for music lessons.

**Kingswood Trip**—We’re still missing a few 3rd payments which were due on 27th March.

**DINNER MONEY FOR NEXT HALF TERM £43.70 Check with office for any credits.**

**POSH Easter Holiday Play Scheme.—Important**

The Playscheme will run on Wednesday 8th, Thursday 9th, Wednesday 15th, Thursday 16th.

Re Monday 20th—the Playscheme will not be running on this day as POSH has received a booking for only 2 children. Apologies. (Contact Brenda Dunn 01223 207270 with any questions).

We have been chosen to take a key role in phase one of the DCSF 1:1 (one to one!) tuition project. Some specially selected pupils in year 6 have been chosen to take part to boost their English or maths on the basis of careful teacher assessments.

The governing body met for a strategic meeting last night to discuss the budget and staffing allocation, building and other important matters in preparation for September 2009 onwards.



There is not particularly good news for us as things look tight; but not impossible. We are all working on ways in which we can maximise the possibilities to have the greatest positive impact on learning. More news when we have it. There are still a number of uncertainties as we do not have the top line figures until the new financial year.

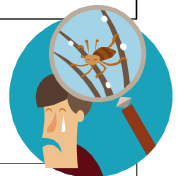
**Attention all footballers and fans!**

We will be playing against Bassingbourn tomorrow after school. Please come along and support your team as they play. It’s great to share in the drama of the game, and to celebrate our successes.

Keep saving your reusable clothing, linen, curtains, handbags, shoes, belts and soft toys for next term’s Bags 2 School collection.

Bags will be distributed today on behalf of the PTA to each household to start the process of sorting and collecting.

HEAD LICE! We are being visited again by our little friends, please check your child’s hair on a regular basis. Thank you.



## **CHARITY QUIZ NIGHT**

(hosted by Vince)

Saturday 25 April at Petersfield School. 7.30pm start, fish'n'chip supper, licensed bar, raffle, lots of fun and prizes to be had. Tickets £10 per person. Teams of up to 8. Raising money for the Playtex Moonwalk in aid of vital Breast Cancer Charities. Tickets available from school office, Orwell Post Office or by ringing Alison Colling on 01223 207369. (support the Charity and wear something pink!) *Or just wear something!*

### **Learner of the week: week ending 27.3.09**

Eagles—Mya Chapman  
Owls—Rebecca Walford  
Kingfishers—Calum Mitchell  
Swallows—Owen Martin  
Woodpeckers—William Richardson  
Robins—Daniel Ladbrook

### **Carer of the week: week ending 27.3.09**

Eagles—Brodie Weir  
Owls—Rachel Whittingham  
Kingfishers—Calum Mitchell  
Swallows—Matthew Martin  
Woodpeckers—Ryan Davies and Anna Rawlins  
Robins—Kieran Paxton

### **NAMING OF SCHOOL CLOTHES**

Please can all parents check over the Easter holidays that all items of school clothing are named. There's an amazing number of children walking around in unnamed fleeces and sweatshirts.

### **A message from The Skipper family**

"Thank You—To all the staff, students and parents of Petersfield, thank you so much for being so friendly, kind and helpful to Max and Zephyr. They've had a wonderful experience at Petersfield and settled in so well because they were made to feel so welcome and accepted by everyone. We've all made some lovely friends through the school. If anyone is planning a trip to Australia and would like to look us up, please do, it would be great for the kids to see their English friends in Oz. Thank you again, we really appreciate all the help everyone has given especially Mrs Gwynn and Mr. Timms. Deby, Alan, Max and Zephyr Skipper"

*We have really enjoyed having Max and Zephyr at Petersfield and would like to say thank you for all the help Alan and Deby have been to the school during their stay, we wish them well.*



HAPPY EASTER TO EVERYBODY!

RETURN TO SCHOOL TUESDAY 21ST APRIL